

GREENVIEW RESIDENT EVACUATION GUIDE

UPDATED JUNE 2026



Municipal District of
GREENVIEW

Table of Contents

Introduction	2
Know Your Evacuation Zone	3
Understanding Evacuation Notifications	10
How You Will Be Notified	11
If You Need to Evacuate	12
Registration	12
Road Closures and Re-Entry	13
Be Prepared Before an Emergency	14
Emergency Supply Kit Checklist	15
Wildfire Evacuation Checklists	16
Wildfire Home Preparation Checklist	17



Introduction

The Municipal District of Greenview (Greenview) is committed to protecting the safety and well-being of residents during emergencies.

Wildfires, floods, industrial incidents, severe weather events, and other emergencies can develop quickly and may require residents to leave an area with little warning. Being prepared before an emergency occurs can help you respond quickly and safely.

This guide explains:

- How evacuation zones are organized
- What evacuation notifications mean
- How emergency information will be shared
- What to do if you need to evacuate
- How to prepare your household in advance

Taking time now to review this information will help you and your family respond safely if an evacuation becomes necessary.

Know Your Evacuation Zone

To support safe and organized evacuations, Greenview has been divided into five evacuation zones.

Residents should become familiar with the evacuation zones where they:

- Live
- Work
- Attend school
- Access childcare
- Visit family members
- May need to assist others during an emergency

Greenview Evacuation Zones

Zone 1. DeBolt Fire District

Zone 2. Valleyview Fire District

Zone 3. Fox Creek Fire District

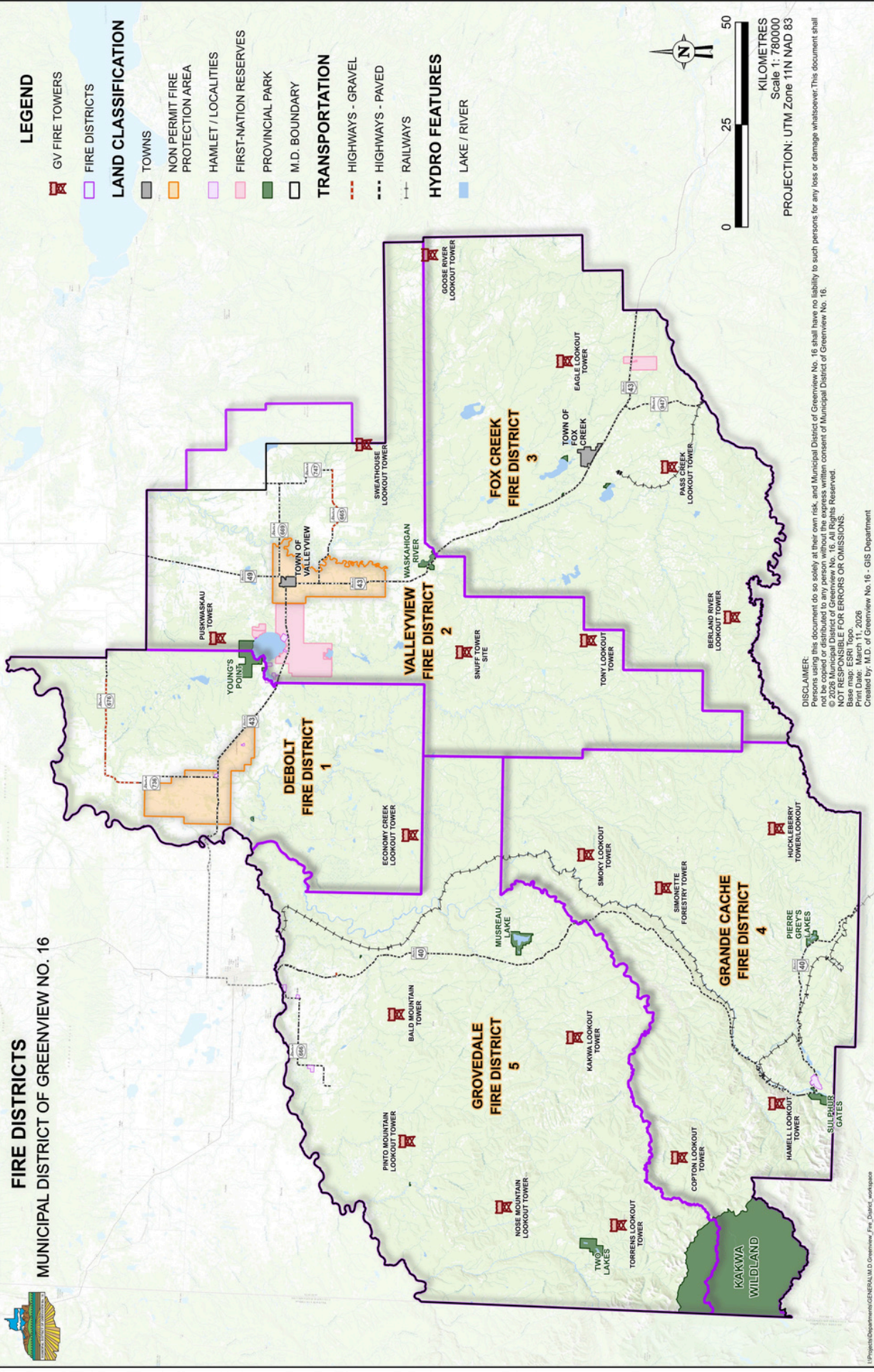
Zone 4. Grande Cache Fire District

Zone 5. Grovedale Fire District

Important

Zone numbers are used for identification purposes only. They do not indicate the order in which areas will be evacuated.

Evacuation decisions are based on public safety risks and emergency conditions.



- LEGEND**
- GV FIRE TOWERS
 - FIRE DISTRICTS

- LAND CLASSIFICATION**
- TOWNS
 - NON PERMIT FIRE PROTECTION AREA
 - HAMLET / LOCALITIES
 - FIRST-NATION RESERVES
 - PROVINCIAL PARK
 - M.D. BOUNDARY

- TRANSPORTATION**
- HIGHWAYS - GRAVEL
 - HIGHWAYS - PAVED
 - RAILWAYS

- HYDRO FEATURES**
- LAKE / RIVER

N

0 25 50

KILOMETRES

Scale 1: 780000

PROJECTION: UTM Zone 11N NAD 83

FIRE DISTRICTS
MUNICIPAL DISTRICT OF GREENVIEW NO. 16

DISCLAIMER: Persons using this document do so solely at their own risk, and Municipal District of Greenview No. 16 shall have no liability to such persons for any loss or damage whatsoever. This document shall not be used or distributed to any person without the express written consent of Municipal District of Greenview No. 16.

© 2026 Municipal District of Greenview No. 16. All Rights Reserved.

NOT RESPONSIBLE FOR ERRORS OR OMISSIONS.

Base map: ESRI Topo 2026

Created by: M.D. of Greenview No. 16 - GIS Department

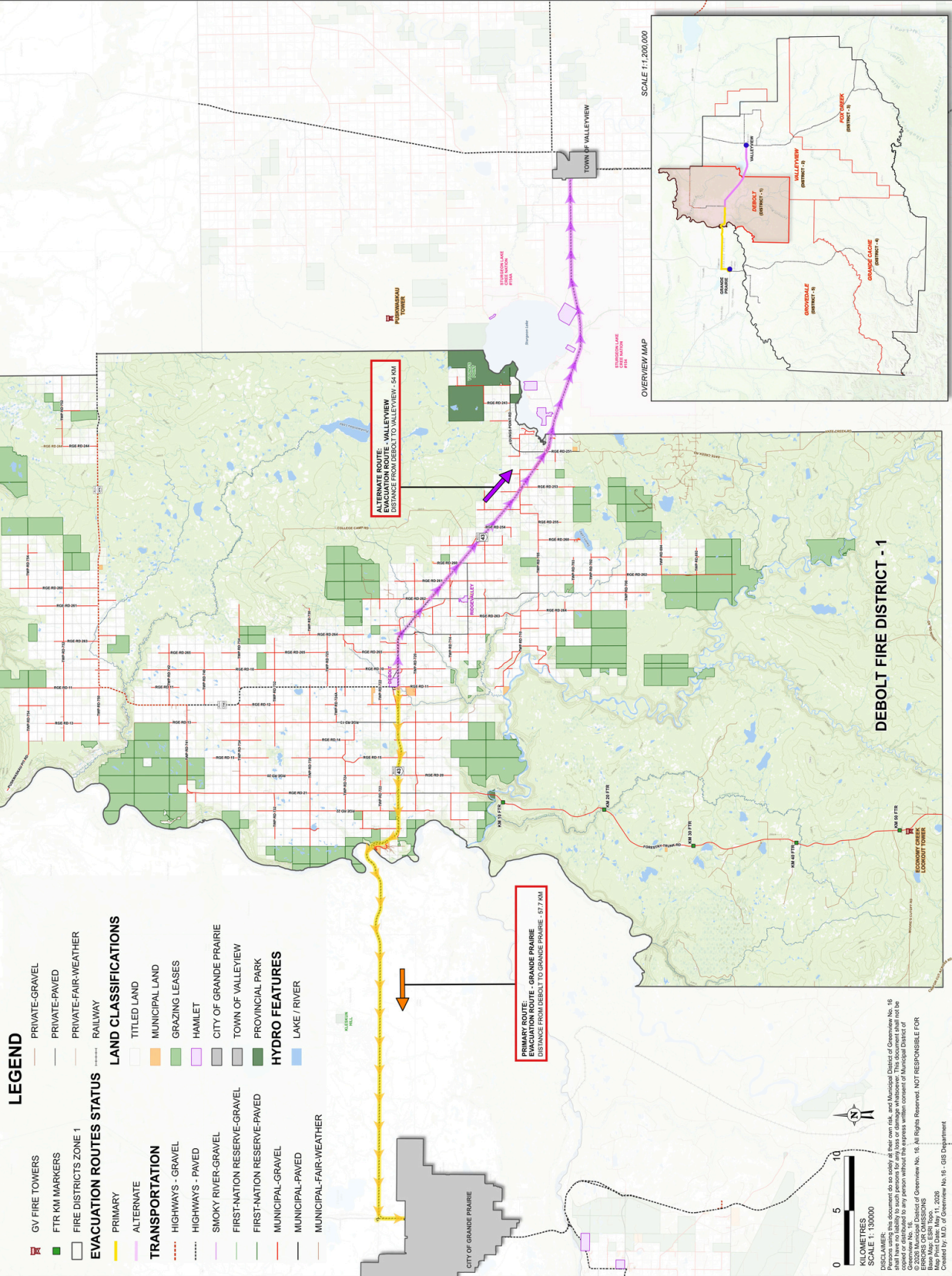
MUNICIPAL DISTRICT OF GREENVIEW NO. 16

DEBOLT

EVACUATION AREA & EVACUATION ROUTES MAP

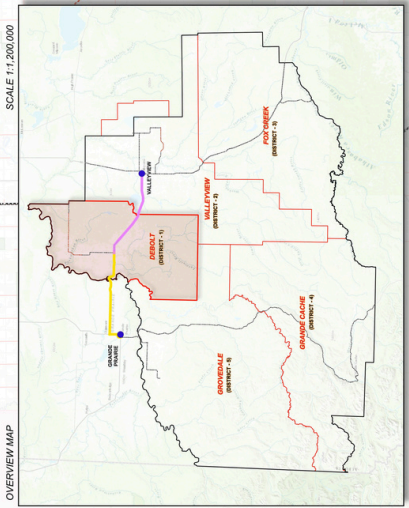


- LEGEND**
- GV FIRE TOWERS
 - PRIVATE-GRAVEL
 - FTR KM MARKERS
 - PRIVATE-PAVED
 - FIRE DISTRICTS ZONE 1
 - PRIVATE-FAIR-WEATHER
 - RAILWAY
- EVACUATION ROUTES STATUS**
- PRIMARY
 - ALTERNATE
- TRANSPORTATION**
- HIGHWAYS - GRAVEL
 - HIGHWAYS - PAVED
 - SMOKY RIVER-GRAVEL
 - FIRST-NATION RESERVE-GRAVEL
 - FIRST-NATION RESERVE-PAVED
 - MUNICIPAL-GRAVEL
 - MUNICIPAL-PAVED
 - MUNICIPAL-FAIR-WEATHER
- LAND CLASSIFICATIONS**
- TITLED LAND
 - MUNICIPAL LAND
 - GRAZING LEASES
 - HAMLET
 - CITY OF GRANDE PRAIRIE
 - TOWN OF VALLEVIEW
 - PROVINCIAL PARK
- HYDRO FEATURES**
- LAKE / RIVER



PRIMARY ROUTE: -GRANDE PRAIRIE
 EVACUATION ROUTE - GRANDE PRAIRIE
 DISTANCE FROM DEBOLT TO GRANDE PRAIRIE: 57.7 KM

ALTERNATE ROUTE: -VALLEVIEW
 EVACUATION ROUTE - VALLEVIEW
 DISTANCE FROM DEBOLT TO VALLEVIEW: 5.4 KM



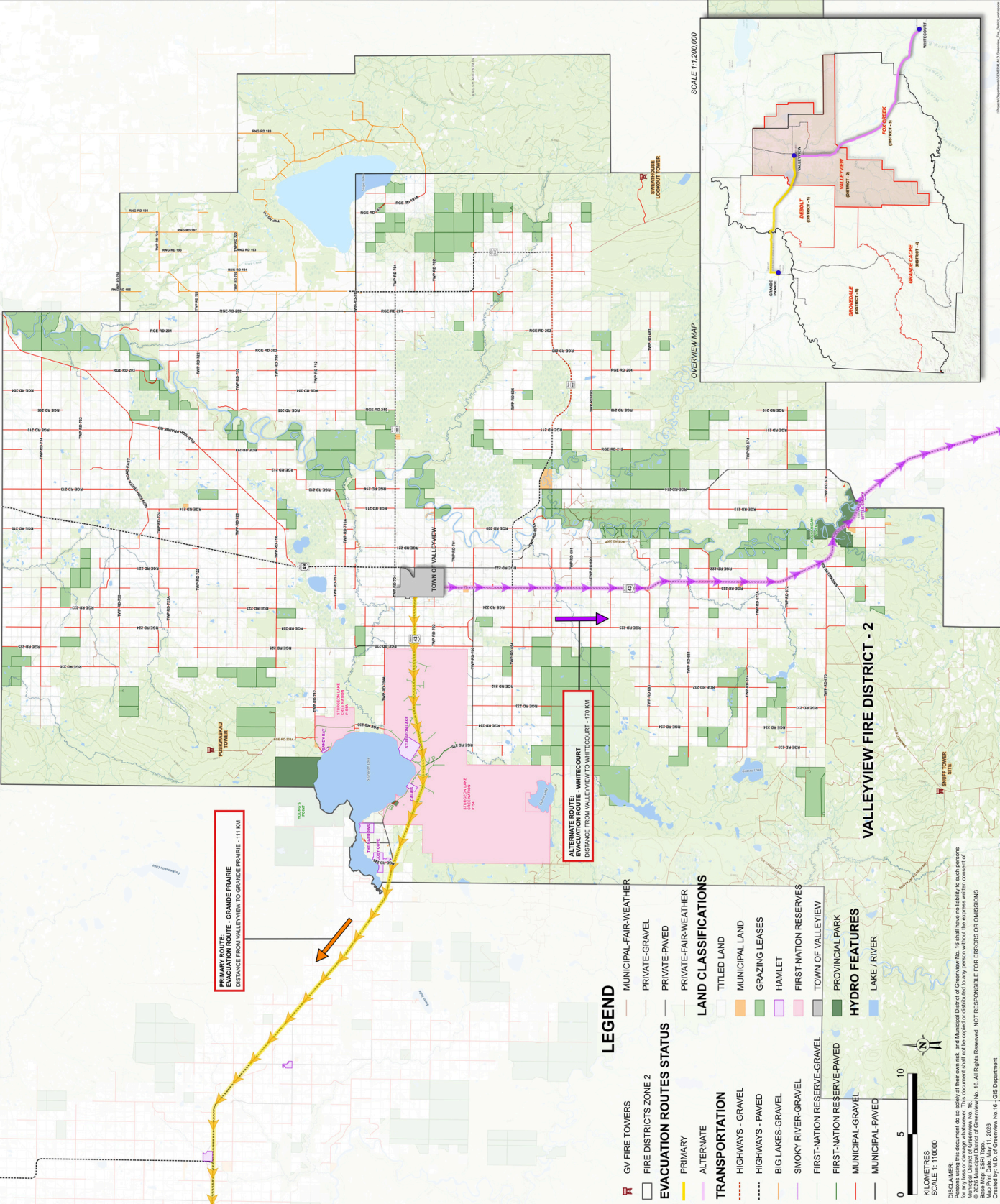
DEBOLT FIRE DISTRICT - 1

0 5 10

DISCLAIMER:
 The information on this document is solely the property of the Municipal District of Greenview No. 16. It is provided for informational purposes only and is not intended to be used for any other purpose. The user of this document is advised to verify the accuracy of the information for their own use. The Municipal District of Greenview No. 16 is not responsible for any errors or omissions in this document. All Rights Reserved. NOT RESPONSIBLE FOR ANY DAMAGE TO PERSONS OR PROPERTY.

DATE: MAY 18, 2023
 SCALE: 1:130,000
 DRAWN BY: M.D. GREENVIEW

MUNICIPAL DISTRICT OF GREENVIEW NO. 16 VALLEYVIEW EVACUATION AREA & EVACUATION ROUTES MAP



PRIMARY ROUTE - GRANDE PRAIRIE
EVACUATION ROUTE - GRANDE PRAIRIE - 111 KM
DISTANCE FROM VALLEYVIEW TO GRANDE PRAIRIE - 111 KM

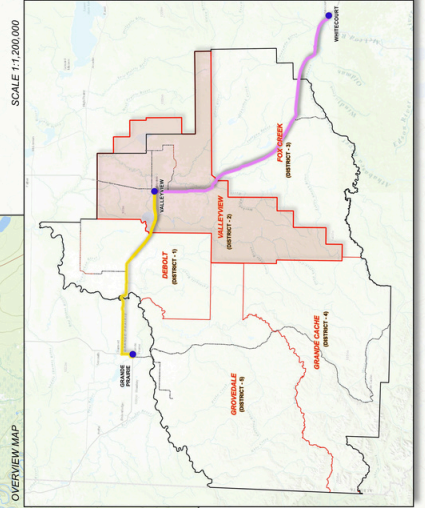
ALTERNATE ROUTE - WHITECOURT
EVACUATION ROUTE - WHITECOURT - 170 KM
DISTANCE FROM VALLEYVIEW TO WHITECOURT - 170 KM

LEGEND

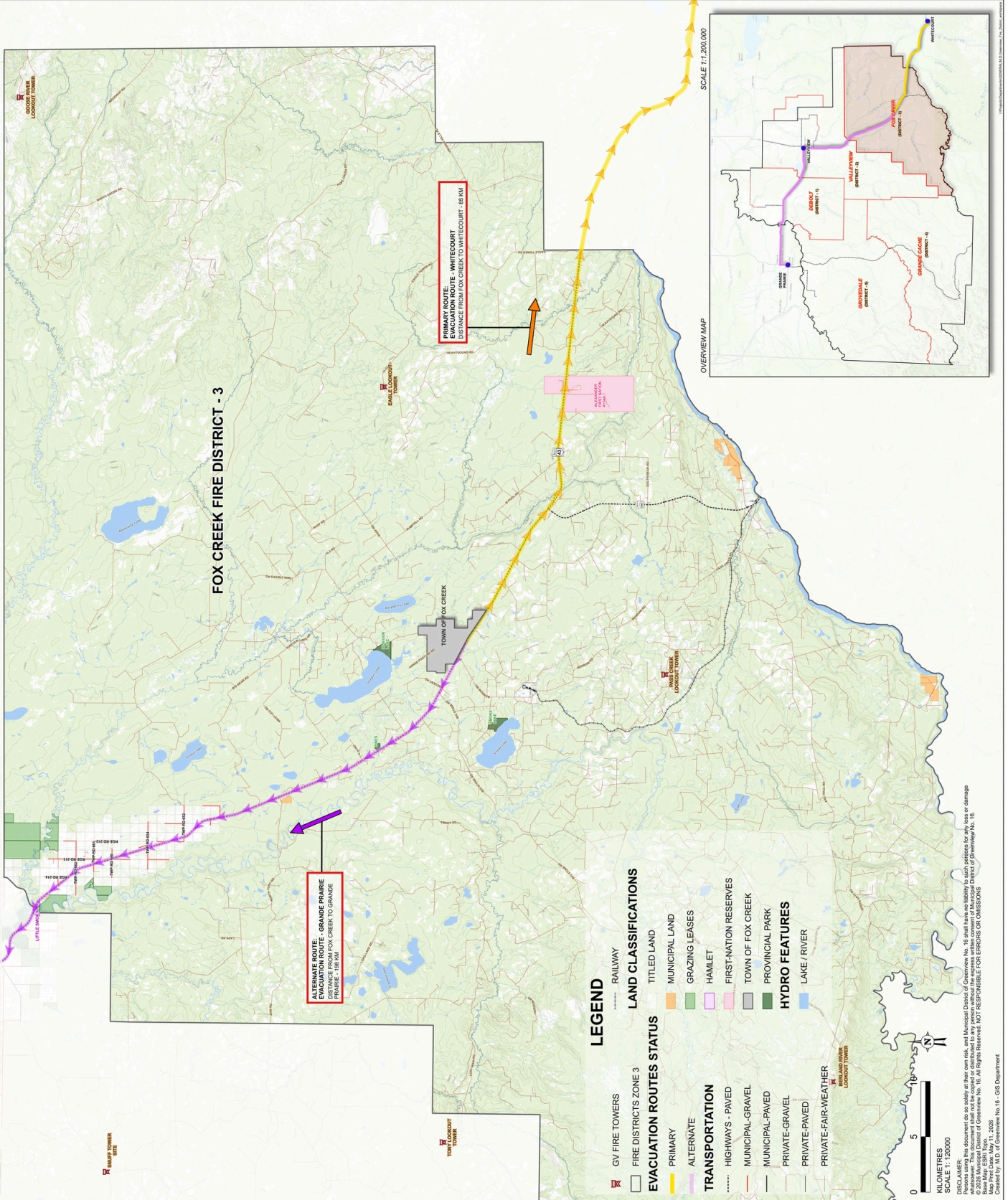
- GV FIRE TOWERS
- FIRE DISTRICTS ZONE 2
- EVACUATION ROUTES STATUS
 - PRIMARY
 - ALTERNATE
- TRANSPORTATION
 - HIGHWAYS - GRAVEL
 - HIGHWAYS - PAVED
 - BIG LAKES - GRAVEL
 - SMOKY RIVER - GRAVEL
 - FIRST-NATION RESERVE - GRAVEL
 - FIRST-NATION RESERVE - PAVED
 - MUNICIPAL - GRAVEL
 - MUNICIPAL - PAVED
- LAND CLASSIFICATIONS
 - TITLED LAND
 - MUNICIPAL LAND
 - GRAZING LEASES
 - HAMLET
 - FIRST-NATION RESERVES
 - TOWN OF VALLEYVIEW
 - PROVINCIAL PARK
- HYDRO FEATURES
 - LAKE / RIVER

0 5 10
KILOMETRES
SCALE 1:110,000

PERSONS USING THIS DOCUMENT DO SO SOLELY AT THEIR OWN RISK, AND MUNICIPAL DISTRICT OF GREENVIEW NO. 16 SHALL HAVE NO LIABILITY TO SUCH PERSONS. MUNICIPAL DISTRICT OF GREENVIEW NO. 16 AND ITS EMPLOYEES SHALL NOT BE HELD RESPONSIBLE FOR ERRORS OR OMISSIONS.
Map Print Date: May 31, 2026
Created by: B.D. Greenview No. 16 - GIS Department

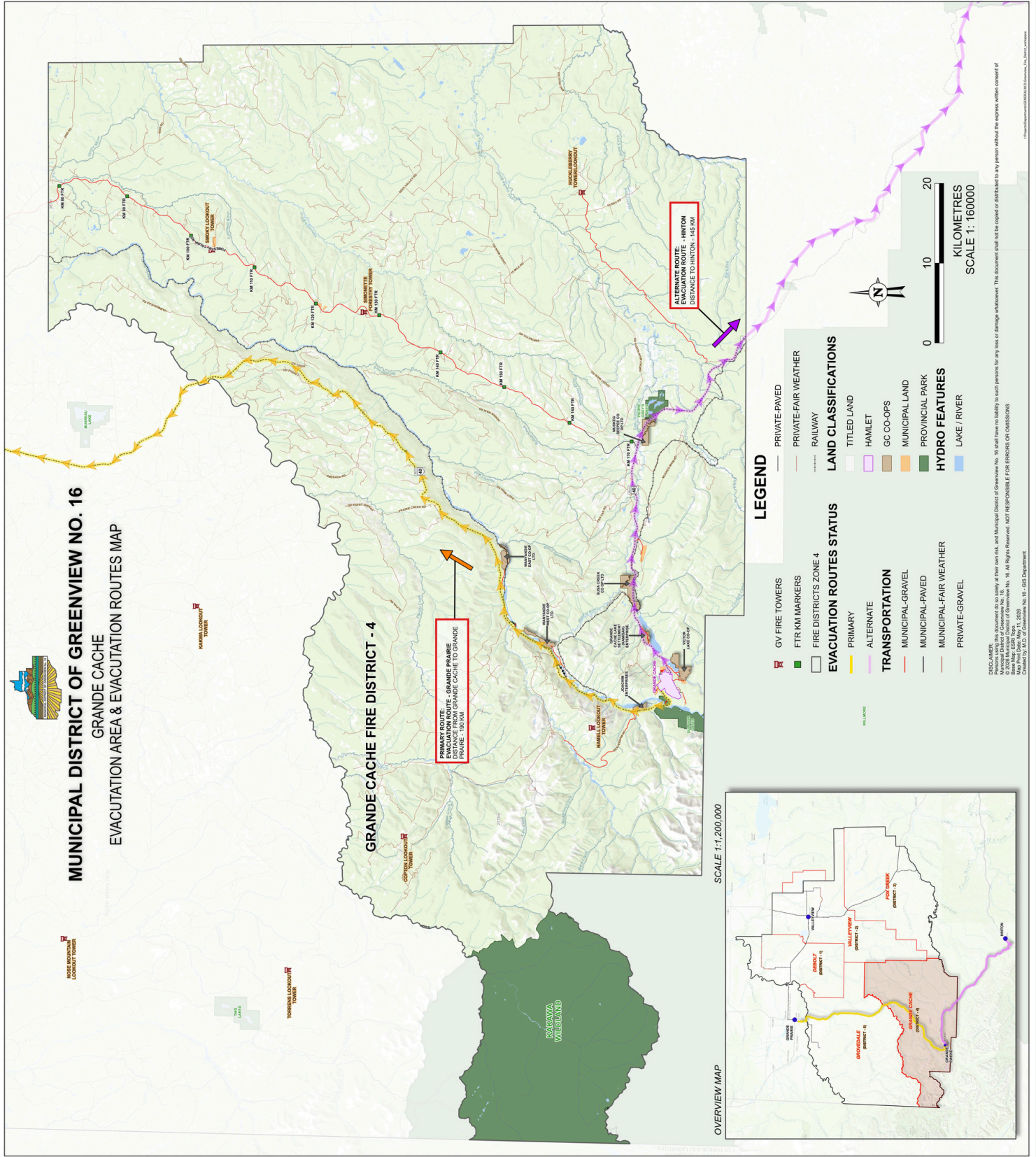


MUNICIPAL DISTRICT OF GREENVIEW NO. 16 FOX CREEK EVACUATION AREA & EVACUATION ROUTES MAP





MUNICIPAL DISTRICT OF GREENVIEW NO. 16
GRANDE CACHE
 EVACUATION AREA & EVACUATION ROUTES MAP



PRIMARY ROUTE - GRANDE PRAIRIE
 DISTANCE FROM GRANDE CACHE TO GRANDE PRAIRIE - 18.0 KM

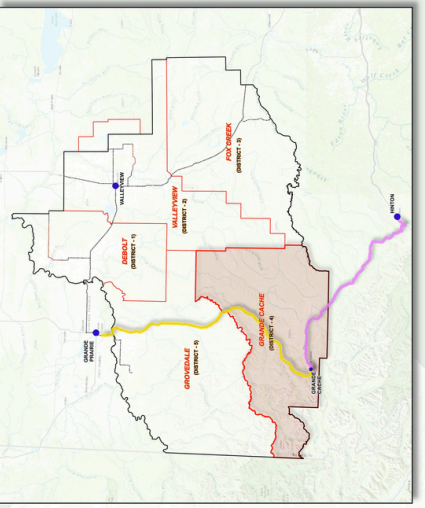
ALTERNATE ROUTE - HINTON
 DISTANCE TO HINTON - 145 KM

LEGEND

- GV FIRE TOWERS
- FTR KM MARKERS
- FIRE DISTRICTS ZONE 4
- PRIMARY
- ALTERNATE
- MUNICIPAL-GRAVEL
- MUNICIPAL-PAVED
- MUNICIPAL-FAIR WEATHER
- PRIVATE-PAVED
- PRIVATE-FAIR WEATHER
- RAILWAY
- TITLED LAND
- HAMLET
- GC CO-OPS
- MUNICIPAL LAND
- PROVINCIAL PARK
- LAKE / RIVER

SCALE 1:1,200,000

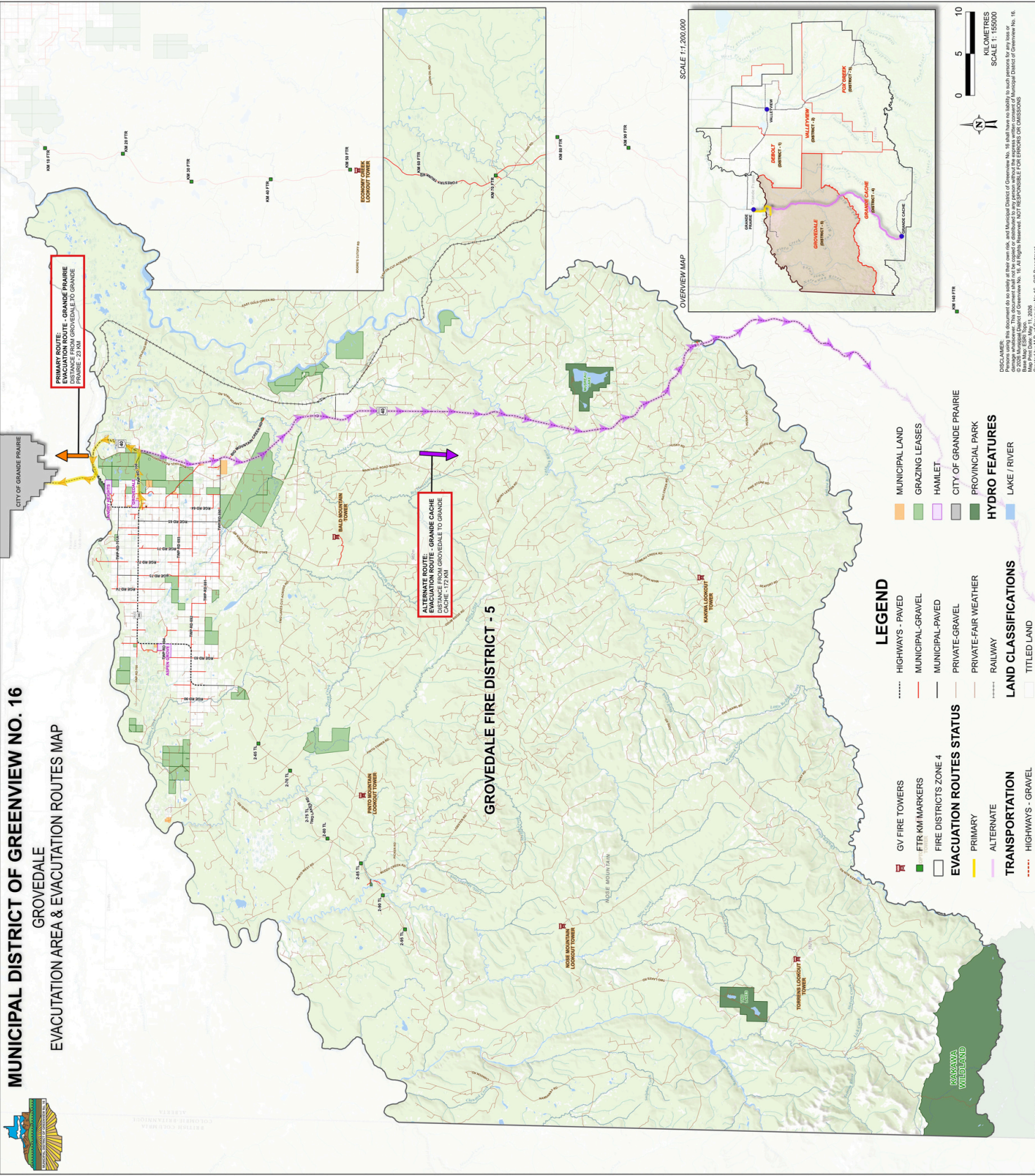
OVERVIEW MAP



DISCLAIMER: This document is for informational purposes only and does not constitute a contract. The user assumes all liability for any loss or damage whatsoever. This document shall not be copied or distributed in any form without the express written consent of the Municipal District of Greenview No. 16. All Rights Reserved. NOT RESPONSIBLE FOR ERRORS OR OMISSIONS. Created by: R.D. / Greenview No. 16 - GIS Department



MUNICIPAL DISTRICT OF GREENVIEW NO. 16
GROVEDALE
EVACUATION AREA & EVACUATION ROUTES MAP

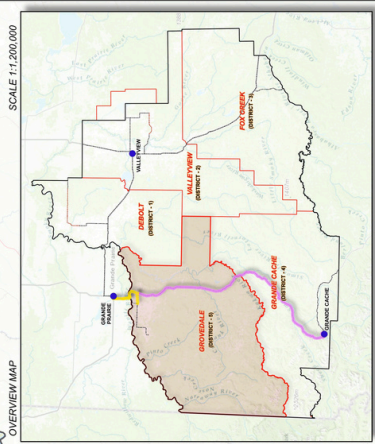


PRIMARY ROUTE - EVACUATION ROUTE - GRANDE PRAIRIE
 EVACUATION ROUTE - GRANDE PRAIRIE
 PRIMARY ROUTE - FROM GROVEDALE TO GRANDE PRAIRIE

ALTERNATE ROUTE - EVACUATION ROUTE - GRANDE CACHE
 EVACUATION ROUTE - GROVEDALE TO GRANDE CACHE - 172 KM

GROVEDALE FIRE DISTRICT - 5

- LEGEND**
- GV FIRE TOWERS
 - FTR KM MARKERS
 - EVACUATION ROUTES STATUS
 - PRIMARY
 - ALTERNATE
 - TRANSPORTATION
 - HIGHWAYS - GRAVEL
 - HIGHWAYS - PAVED
 - MUNICIPAL - GRAVEL
 - MUNICIPAL - PAVED
 - PRIVATE - GRAVEL
 - PRIVATE - FAIR WEATHER
 - RAILWAY
 - LAND CLASSIFICATIONS
 - TITLED LAND
 - MUNICIPAL LAND
 - GRAZING LEASES
 - HAMLET
 - CITY OF GRANDE PRAIRIE
 - PROVINCIAL PARK
 - HYDRO FEATURES
 - LAKE / RIVER



DISCLAIMER:
 Persons using this document do so solely at their own risk, and Municipal District of Greenview No. 16 shall have no liability to such persons for any loss or damage, including consequential, special, or exemplary damages, arising out of the use of this document.
 © 2026 Municipal District of Greenview No. 16. All Rights Reserved. NOT RESPONSIBLE FOR ERRORS OR OMISSIONS.
 Approved: May 11, 2026
 Created by: J.D. Greenview No. 16 - GIS Department

Understanding Evacuation Notifications

Greenview may issue different types of notifications depending on the situation.

Public Warning

A Public Warning advises residents that a situation exists which may affect the community.

Examples include:

- Wildfire activity
- Flood risks
- Industrial incidents

Residents should monitor official information sources and be prepared to act if conditions worsen.

Evacuation Alert

An Evacuation Alert means there is a potential threat to public safety. Residents should prepare to leave on short notice.

Recommended actions:

- Gather essential belongings
- Prepare your emergency kit
- Fuel your vehicle
- Make arrangements for pets and livestock
- Review evacuation routes
- Consider leaving early if appropriate

Evacuation Order

An Evacuation Order is issued when there is an immediate threat to public safety.

Residents within the affected area must leave immediately.

When an Evacuation Order is issued:

- Leave without delay
- Follow designated evacuation routes
- Take essential belongings
- Register after reaching safety
- Do not return until authorized

Individuals who choose to remain do so at their own risk and may not receive emergency services during the evacuation.

How You Will Be Notified

Emergency information may be distributed through the following official channels:

ALBERTA EMERGENCY ALERT

Alberta Emergency Alert provides urgent emergency information and instructions.

Website: www.emergencyalert.alberta.ca

Mobile applications are available for Apple and Android devices.

VOYENT ALERT

Voyent Alert is Greenview's emergency notification platform.

Residents are encouraged to register to receive emergency updates directly through their preferred communication channels.

MUNICIPAL DISTRICT OF GREENVIEW WEBSITE

www.mdgreenview.ab.ca

The municipal website provides current information regarding emergencies, evacuations, road closures, reception centres, and recovery efforts.

GREENVIEW SOCIAL MEDIA

 @MDofGreenview

 @greenviewgrandecache

Follow the official MD of Greenview social media channels for emergency updates and public information.

Always verify information using official municipal communication channels.

If You Need to Evacuate

Evacuation Routes

Evacuation routes will vary depending on the type, location, and severity of the emergency.

Specific evacuation routes will be communicated through:

- Alberta Emergency Alert
- Voyent Alert
- Greenview website
- Official Greenview social media channels

Follow the route identified through official emergency notifications.

Where to Go

Depending on the emergency, residents may:

- Stay with family or friends
- Arrange private accommodations
- Travel to a designated Reception Centre
- Travel to a Temporary Evacuation Point (TEP)

Reception Centre and Temporary Evacuation Point locations will be communicated through official emergency notifications.

Registration

If you attend a Reception Centre, you will be asked to register.

Even if you choose to stay elsewhere, registration is strongly encouraged.

If you do not attend a Reception Centre, follow the instructions on how to register as an evacuee.

Registration helps Greenview:

- Confirm residents have safely evacuated
- Support emergency response operations
- Plan for evacuee needs
- Coordinate with neighbouring communities
- Provide information to family members seeking updates

Road Closures and Re-Entry

When an Evacuation Order is issued, road closures and access control points may be established.

Residents will not be permitted to enter the affected area until emergency officials determine it is safe to return.

Please respect:

- Road closure signs
- Barricades
- Directions from emergency personnel

Do not attempt to bypass access controls or return to an evacuated area until authorization has been provided.

Permitted Access

During an evacuation, limited access to the evacuation zone may be granted for specific purposes such as caring for livestock, maintaining critical industrial operations, or other essential activities. Access is not guaranteed and will be subject to an approved permit process based on safety considerations and operational conditions. Information regarding permit eligibility and the application process will be made available on our website during an evacuation event.

Be Prepared Before an Emergency

CREATE A FAMILY EVACUATION PLAN

Your plan should include:

- Emergency contact information
- Family communication procedures
- Meeting locations
- Evacuation routes
- Plans for pets and livestock

Family Emergency Plan Template:

<https://www.canada.ca/en/services/policing/emergencies/preparedness/get-prepared/make-plan/emergency-plan-form.html>

PREPARE YOUR HOME

- Know how to shut off gas, electricity, and water services
- Keep fire extinguishers accessible
- Ensure family members know how to use emergency equipment
- Maintain emergency contact lists

STAY INFORMED

- Sign up for Voyent Alert
- Download Alberta Emergency Alert
- Monitor Greenview communication channels
- Keep a battery-powered radio available

Emergency Supply Kit Checklist

Every household should maintain an emergency supply kit.

Recommended items include:

- Three-day supply of drinking water
- Three-day supply of non-perishable food
- Pet food and supplies
- First aid kit
- Flashlight
- Battery-powered radio
- Extra batteries
- Cell phone chargers
- Cash and banking information
- Prescription medications
- Extra eyeglasses or contact lenses
- Personal identification
- Important documents
- Emergency contact information
- Extra clothing
- Sanitation supplies
- Map showing evacuation routes
- Easily carried valuables and irreplaceable items
- Spare vehicle keys

Keep an additional emergency kit in your vehicle whenever possible.

Wildfire Evacuation Checklists

Be Ready

- Monitor wildfire conditions
- Review evacuation routes
- Fuel vehicles
- Prepare emergency kits
- Arrange transportation for pets and livestock
- Notify family members of your plans

Be Set

- Stay informed through official channels
- Pack essential belongings
- Contact neighbours who may need assistance
- Prepare your property if time allows
- Be ready to leave immediately

Go Now

If an Evacuation Order is issued:

- Leave immediately
- Follow designated evacuation routes
- Take your emergency kit
- Bring medications and important documents
- Register after reaching safety
- Do not return until authorized

Wildfire Home Preparation Checklist

Inside Your Home

- Close all windows and doors
- Leave doors unlocked
- Remove combustible curtains and window coverings
- Move combustible furniture away from windows
- Shut off gas at the meter
- Turn off pilot lights
- Leave lights on
- Turn off air conditioning systems

Outside Your Home

- Bring combustible outdoor items indoors
- Turn off propane tanks
- Leave exterior lights on
- Back vehicles into driveways
- Close vehicle windows
- Have a ladder available
- Extinguish small spot fires if safe to do so
- Seal attic and ground vents if time permits

If You Become Trapped During a Wildfire

- Shelter away from exterior walls
- Bring garden hoses indoors
- Monitor for spot fires
- Wear long sleeves and pants made from natural fibres
- Stay hydrated
- Fill sinks and tubs with water
- Place wet towels under doors
- Watch for embers after the fire passes
- Check your roof and attic for fire activity
- Call 9-1-1 if you encounter a fire that cannot be safely controlled