

GRANDE CACHE LANDFILL

LOCATION

The Grande Cache Class II Landfill is located 1.2 km north of Grande Cache on Highway 40.

LANDFILL HOURS

- Tuesday - Saturday 10:30 am - 6:00 pm
- Closed Sunday, Monday & Statutory Holidays

ENSURE

All garbage must be covered when transferred to the landfill. All material must be sorted and placed as directed into the appropriate areas.

All small engine motors must be drained of all fluid and oils. For example, vehicles, weed-wacker, chainsaw, lawnmower dirt bikes, ATV's, etc.

FREE ITEMS ACCEPTED

- Batteries
- E-waste (TV, computer, fax machine etc.)
- Tires
- Propane Tanks (maximum size 30 lbs)

RESTRICTED ITEMS

- ✗ Contaminated refuse and soil
- ✗ Gas and diesel
- ✗ Medical waste
- ✗ Dangerous goods harmful chemicals, coolant, toxic waste, asbestos etc.
- ✗ Railway ties
- ✗ Dangerous goods

SCHEDULE OF FEES

As of July 26, 2019, Greenview residents will pay a zero tipping fee to access the Grande Cache Landfill.

NEW GRANDE CACHE LANDFILL FEES AS OF JANUARY 10, 2023:

i. GREENVIEW RESIDENTS	No Fees
ii. MIXED LOAD DISPOSAL FEE (Residents & Commercial)	\$210/tonne
iii. COMMERCIAL WASTE (By approval only)	\$105/tonne
iv. BURNABLE WOOD (Excludes Creosote, Treated Wood & Similar Materials)	\$55/tonne
CLEAN MULCH/WOODCHIPS	\$55/tonne
METALS	\$55/tonne
CEMENT/CONCRETE	\$55/tonne
v. FREON	\$50 per Unit for Removal

Greenview Schedule of Fee's Bylaw No. 22-930
<https://mdgreenview.ab.ca/wp-content/uploads/2023/01/Bylaw-22-930-Schedule-of-Fees-1.pdf>

BOTTLE BINGE DEPOT AT THE LANDFILL

PROGRAM INFORMATION

Residents are encouraged to donate recyclable bottles/cans at the Bottle Binge Depot, located at the entrance of the Grande Cache Landfill. Greenview will then donate the collected bottles to a local, non profit organization from Grande Cache.

BOTTLE BINGE DEPOT HOURS

Tuesday - Saturday 10:30 am - 6:00 pm

HOW TO APPLY

Non profit organizations are invited to apply to collect the donated bottles from the Bottle Binge Depot. Please call 1-825-347-2108 to fill out an application form.

- Applicants must be a non-profit organization to apply
- The organization will be contacted stating their group is eligible to pick up the recyclable bottles stored at the Grande Cache Landfill.
- The selected organization must pick up the bottles within five (5) days from the date of contact to collect the bottles or they will forfeit their right to collect the bottles at this time.

Please email completed forms to
enviroadmin@mdgreenview.ab.ca

For information, please contact 1-825-347-2108.

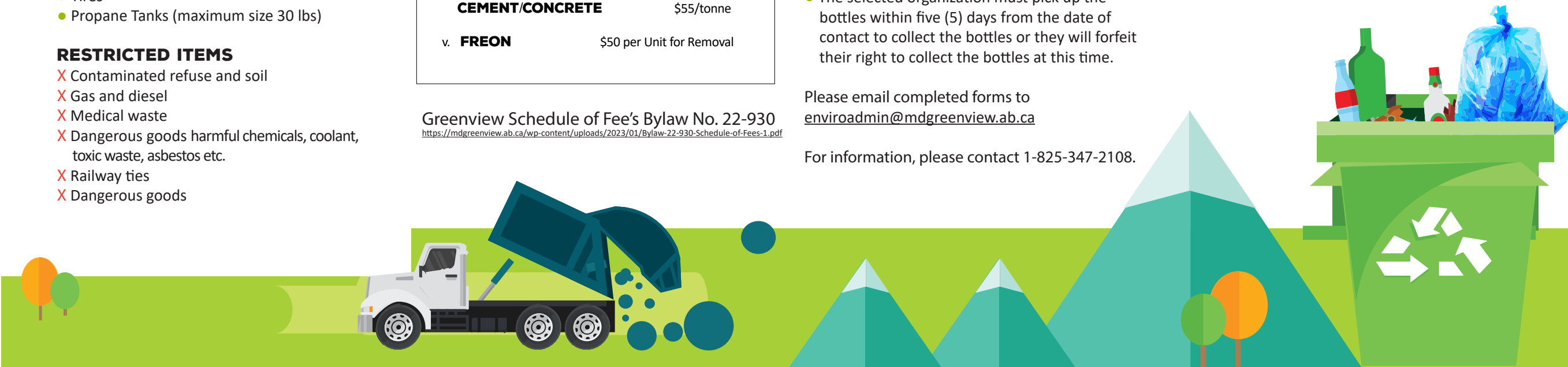
CURBSIDE RECYCLING

PROGRAM INFORMATION

- CLEAN recyclables and ensure they are dry
- BLUE BAG all recyclable items together and place them in the bin.
Overflow items will not be accepted.
- SET your Recycle Bin curbside by 7:00 am every second Monday
- ENSURE wheels are touching curb
- MUST HAVE 6 feet of clearance on all side of the carts, which includes 6 feet between the Garbage Cart & Recycle Cart and parked cars, etc.

Visit <https://mdgreenview.ab.ca/departments/environmental/recycling-program/> for a printable recycling calendar and list of items accepted.

BLUE BAG IT! PLACE IN BIN!



WASTE COLLECTION

WASTE COLLECTION SCHEDULE

Monday	Tuesday	Wednesday	Thursday	Friday
Commercial	Residential (Phase 1, 2 & 5)	Co-Ops & Enterprises	Residential (Phase 3, 4 & 6)	Commercial

RESIDENTIAL WASTE COLLECTION

- Place residential bin curbside by 7:00 am
- Place wheels facing the curb
- Ensure lid is completely closed
- Do not dispose of bulky and extra-heavy materials (dirt, concrete) or hazardous waste in the container
- Double bag animal waste
- Each household has been assigned one Residential Bin
- If you do not currently have a residential bin, please contact Environmental Services 1-825-347-2108.

COMMERCIAL WASTE COLLECTION

- Commercial waste pickup is every Monday and Friday
- If your pickup day falls on a statutory holiday, you will receive waste collection on the day in the notice posted by Greenview on our website at www.mdgreenview.ab.ca and/or "Grande Cache, MD of Greenview" Facebook page.
- If you are interested in renting a commercial bin or having a bin removed from your business, please contact Environmental Services at 1-825-347-2108.

CO-OP AND ENTERPRISES WASTE COLLECTION

- Collected Wednesdays
- Only household garbage is accepted
- All garbage must be bagged and tied
- Bag all waste; all garbage must be inside the bin
- Lids must close completely
- Nothing outside of the bins will be collected
- Access to the bins must be clear (no parked vehicles etc.)

RECYCLING LOCATIONS

Greenview encourages residents and businesses to recycle items and materials - this helps extend the Landfill lifespan.

RECYCLING BINS AT THE LANDFILL

- Paper & Magazines
(Office paper, newspaper, flyer's, magazines, box-board, cereal boxes)
- Tin Cans
(Tin, steel or aluminum cans. Rinse, remove labels & flatten)
- Glass
(Glass jars & clear window pane glass. Rinse jars. Remove labels & lids. No auto glass, colored glass, ceramics, china or fluorescent light bulbs).
- Plastic Containers
(Plastic types #1 - #7. Please rinse)
- Cardboard
(Flatten boxes)

HOURS

Tuesday - Saturday 10:30 am - 6:00 pm
(closed Sunday, Statutory holidays & Saturdays of long weekends)

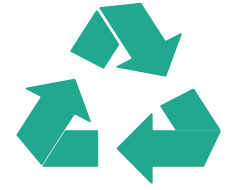
OPERATIONS BUILDING

Located at 9706 Shad Avenue. Accessible all hours. Containers are available at the Operations building for:

- Used oil
- Empty plastic oil jugs
- Empty oil pails

GRASS CLIPPINGS

Accepted at the Landfill.



GRANDE CACHE RECYCLING & WASTE MANAGEMENT

Updated March 2023



For more information, please contact:

Municipal District of Greenview
Environmental Services Department
780-552-3675 or 1-825-347-2108
enviroadmin@mdgreenview.ab.ca

