



	Carmacks Enterprises Ltd.	
	Date: 4/26/2021	
<h3>HIGHWAY 666 DETOUR</h3>		
Project: Highway 40 & 666		
Contract: CON19281	Scale: N.T.S.	
Dwg No. H666_Detour_1		

- NOTES:**
1. Consideration must be given to traffic volume, sight distances, sign spacing, duration of work, night time conditions and other factors to ensure traffic control devices are adequate in each instance.
 2. All sign spacing shall be 100m-150m where applicable.
 3. Intersection control at each intersection must conform to appropriate legislation.
 4. Detour speed limit must be appropriate for each detour route.
 5. During darkness, two type "A" flashing lights shall be placed on top of each barricade.



Carmacks Enterprises Ltd.

Date: 4/26/2021

HIGHWAY 666 DETOUR LOCAL ROADS TWP RD 700

Project: Highway 40 & 666

Contract: CON19281

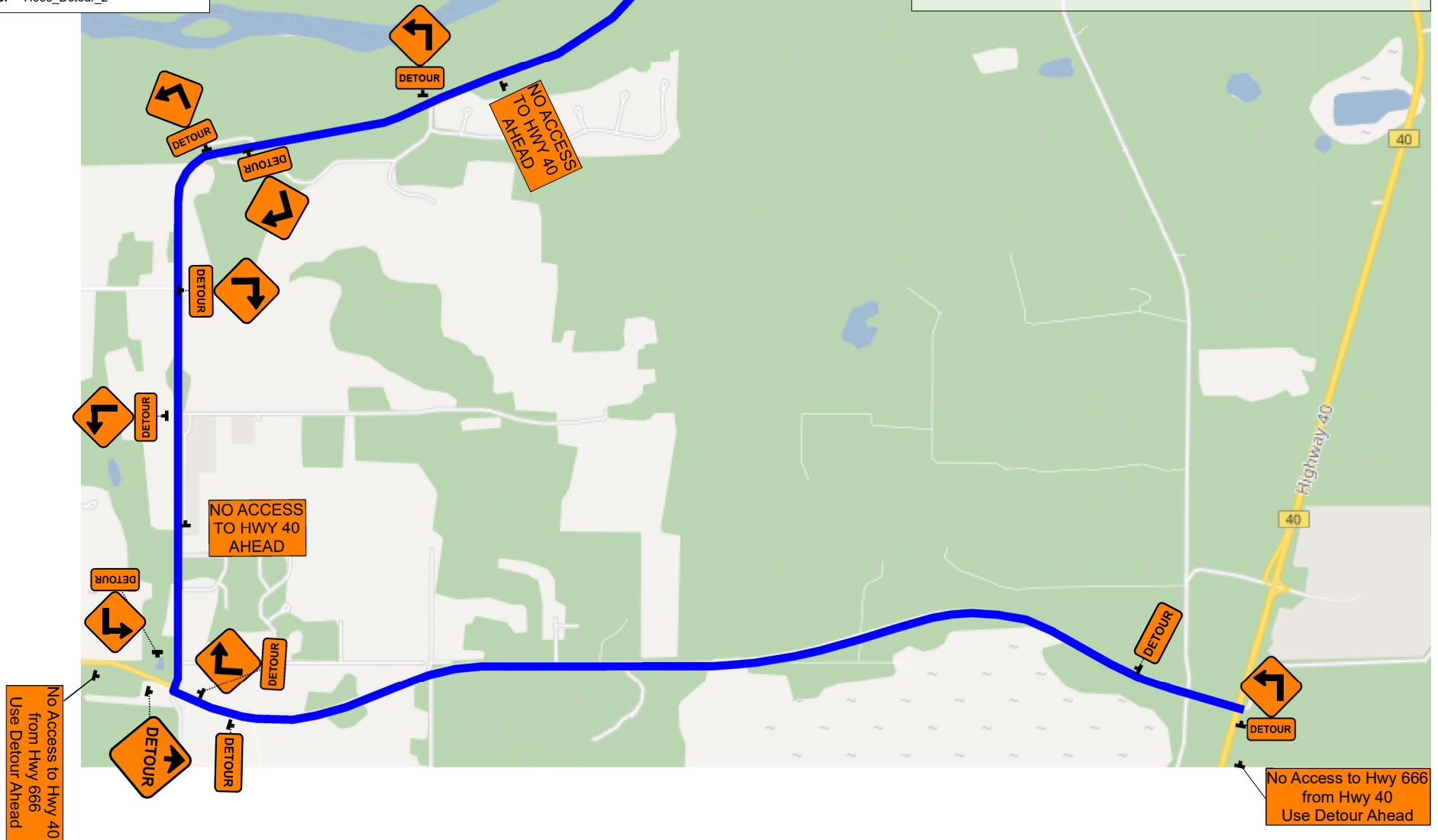
Scale: N.T.S.

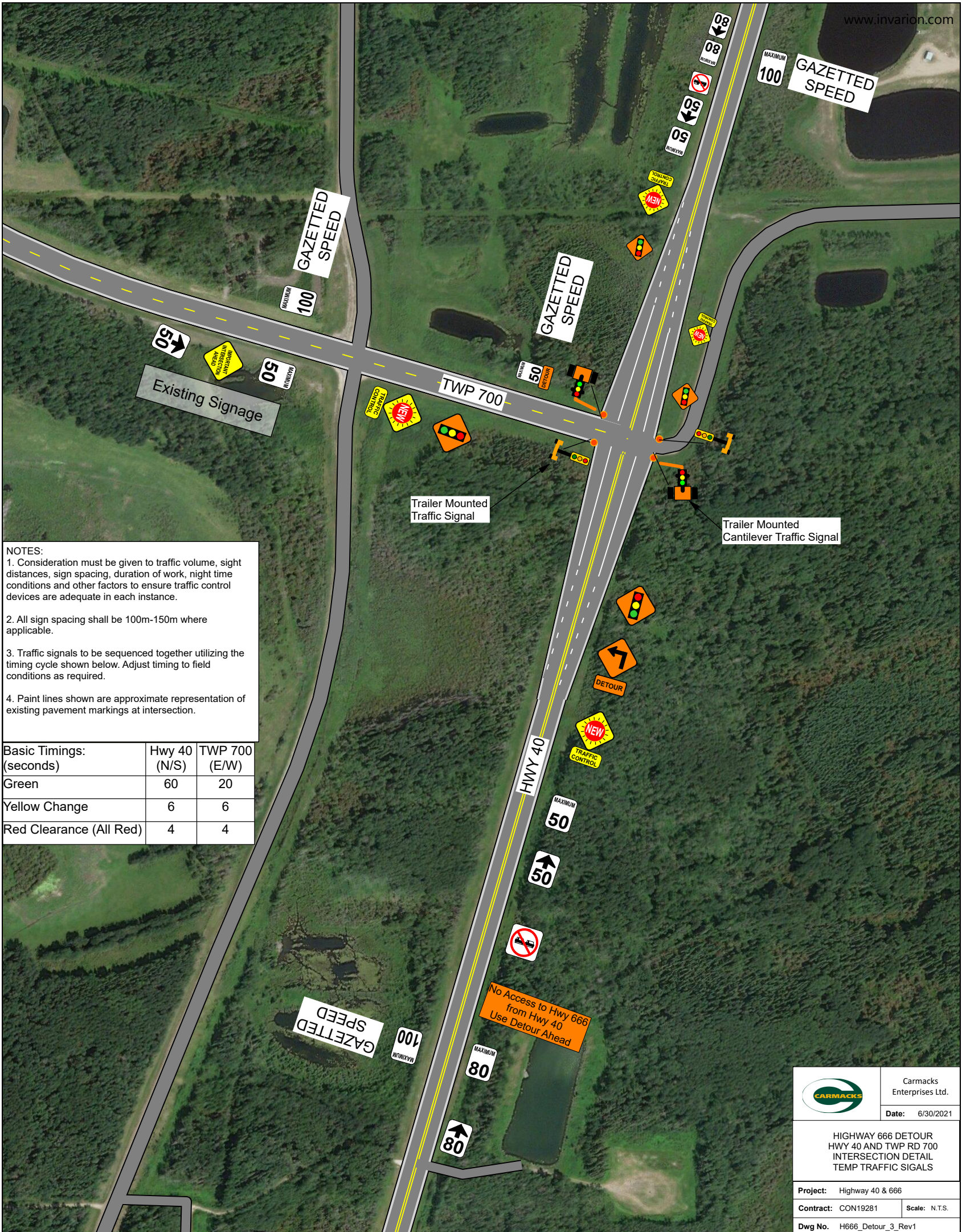
Dwg No. H666_Detour_2

refer to dwg H666_Detour_1 for more details

NOTES:

1. Consideration must be given to traffic volume, sight distances, sign spacing, duration of work, night time conditions and other factors to ensure traffic control devices are adequate in each instance.
2. All sign spacing shall be 100m-150m where applicable.
3. Intersection control at each intersection must conform to appropriate legislation.
4. Detour speed limit must be appropriate for each detour route.
5. During darkness, two type "A" flashing lights shall be placed on top of each barricade.





NOTES:

1. Consideration must be given to traffic volume, sight distances, sign spacing, duration of work, night time conditions and other factors to ensure traffic control devices are adequate in each instance.
2. All sign spacing shall be 100m-150m where applicable.
3. Traffic signals to be sequenced together utilizing the timing cycle shown below. Adjust timing to field conditions as required.
4. Paint lines shown are approximate representation of existing pavement markings at intersection.

Basic Timings: (seconds)	Hwy 40 (N/S)	TWP 700 (E/W)
Green	60	20
Yellow Change	6	6
Red Clearance (All Red)	4	4

No Access to Hwy 666
from Hwy 40
Use Detour Ahead

	Carmacks Enterprises Ltd.
	Date: 6/30/2021
HIGHWAY 666 DETOUR HWY 40 AND TWP RD 700 INTERSECTION DETAIL TEMP TRAFFIC SIGNALS	
Project: Highway 40 & 666	
Contract: CON19281	Scale: N.T.S.
Dwg No. H666_Detour_3_Rev1	