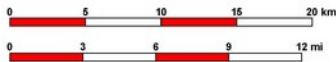


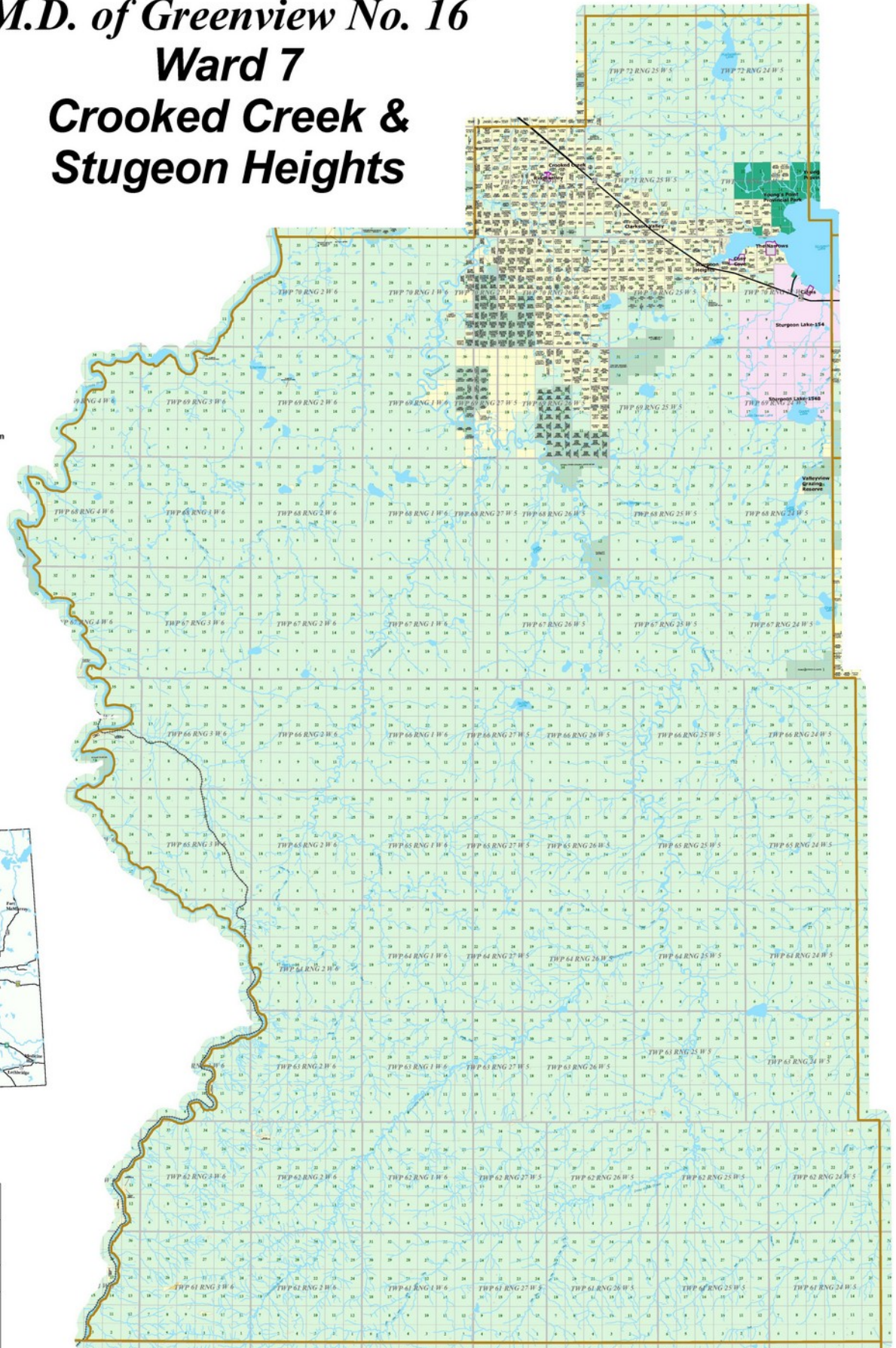


# M.D. of Greenview No. 16 Ward 7 Crooked Creek & Sturgeon Heights

- Legend**
- Titled Parcels
  - Grazing Lease
  - Municipal Properties
  - Parks
  - Reserve/Settlement
  - Wards
  - Paved Highway
  - Gravel Highway
  - Railway



Scale = 1:125,000



**Accurate Assessment Group Ltd.**

M.D. of GREENVIEW No. 16  
Ward 7 Map

Box 1079, 4707 50 Street  
Valleyview, Alberta  
T8B 2N0  
Phone: (780) 524-7600  
Fax: (780) 524-4307

Projection: UTM Zone 11 NAD 83

Date: June 2, 2010

The Municipal District of Greenview makes no representation or warranties regarding the information contained in this document, including, without limitation, whether said information is accurate or complete. Persons using this document do so solely at their own risk, and the Municipal District of Greenview shall have no liability to such persons for any loss or damage whatsoever.

This document shall not be copied or distributed to any person without the express written consent of the Municipal District of Greenview.

© 2010 Municipal District of Greenview. All Rights Reserved.

Compiled from the Rural Cadastral Digital Base March 17, 2010, 1:20,000 Digital Base.  
Land Ownership compiled from municipal tax data, March 16, 2010.  
Building/Other Feature information compiled from municipal assessment data, December 2008.

Due to name length and parcel size some parcels cannot be labelled.  
**NOT RESPONSIBLE FOR ERROR OR OMISSIONS**